

## Magicolor 2300DL firmware network update procedure

### Information Level: 4

(2 = Semi-confidential, Minolta-QMS, internal use only, 3 = Service Partners/Distributors/First Line usage only. 4 = General Information, may be send to end-users.)

**Printer involved:** Magicolor 2300 DL

**Operating system:**

**Application:**

**Driver version:**

### Problem Description:

How to update the Konica-Minolta firmware on the Magicolor 2300 DeskLaser via a network connection.

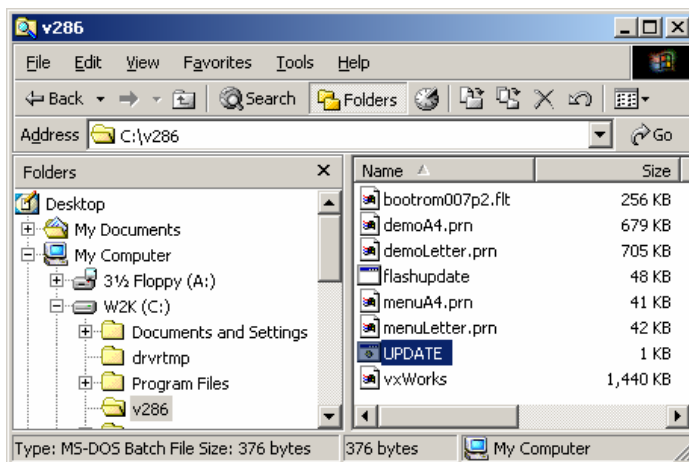
### Solution / Work-around / Answer:

Connect the Magicolor 2300 Desklaser to the PC using a network connection.

**Do NOT reboot the PC or printer engine while code is downloading. Do NOT disconnect the power, Ethernet or parallel cable while code is downloading. If the downloading of the code is interrupted in ANY way, the controller board will be destroyed. Konica Minolta Printing Solutions can not be held liable for damage as result of incorrect firmware updates.**

Verify the printer IP address by printing a configuration page from the printer and checking the IP address.

Copy the v286 directory (unzipped) to your PC's local harddisk.



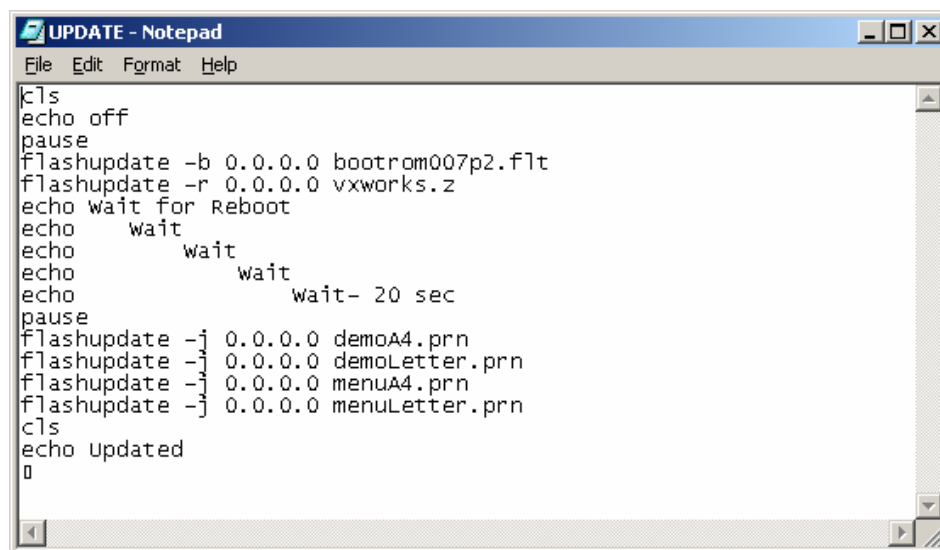
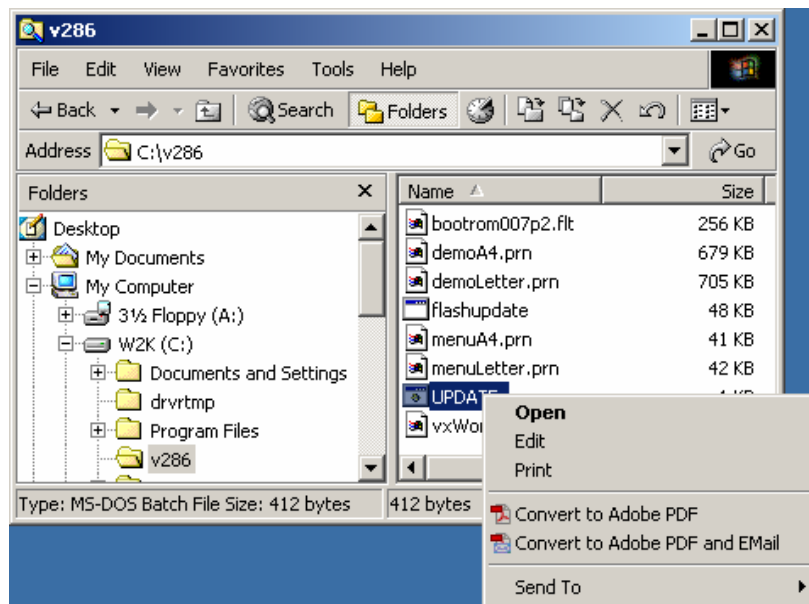


KONICA MINOLTA

Konica Minolta Printing Solutions Europe B.V.  
Support Department  
Website: [www.konicaminolta.net/printer/](http://www.konicaminolta.net/printer/)

Open the file UPDATE.BAT in a text editor. (like Notepad)

You can do this by starting Notepad and opening the file or by right-clicking the UPDATE.BAT file and selecting 'Edit':





KONICA MINOLTA

Konica Minolta Printing Solutions Europe B.V.  
Support Department  
Website: [www.konicaminolta.net/printer/](http://www.konicaminolta.net/printer/)

Enter the printer's IP address in the UPDATE.BAT file by replacing all 0.0.0.0 IP address entries with the correct printer IP address and save the edited file:

```
cls
echo off
pause
flashupdate -b 192.168.6.118 bootrom007p2.flt
flashupdate -r 192.168.6.118 vxworks.z
echo wait for Reboot
echo    wait
echo        wait
echo            wait- 20 sec
pause
flashupdate -j 192.168.6.118 demoA4.prn
flashupdate -j 192.168.6.118 demoLetter.prn
flashupdate -j 192.168.6.118 menuA4.prn
flashupdate -j 192.168.6.118 menuLetter.prn |
cls
echo updated
0
```

**Note:** the address 192.168.6.118 above is just an example.

Open a DOS prompt on your PC and go to the v286 directory on your harddisk:

```
C:\WINNT\system32\cmd.exe
C:\>cd v286
C:\v286>
```

Test the connection to the printer by entering: ping <printer IP address> <Enter>

```
C:\WINNT\system32\cmd.exe
Reply from 192.168.6.118: bytes=32 time<10ms TTL=64
Reply from 192.168.6.118: bytes=32 time<10ms TTL=64
Reply from 192.168.6.118: bytes=32 time<10ms TTL=64
Reply from 192.168.6.118: bytes=32 time<10ms TTL=64

Ping statistics for 192.168.6.118:
    Packets: Sent = 4, Received = 4, Lost = 0 (0% loss),
    Approximate round trip times in milli-seconds:
        Minimum = 0ms, Maximum = 0ms, Average = 0ms

C:\v286>
```

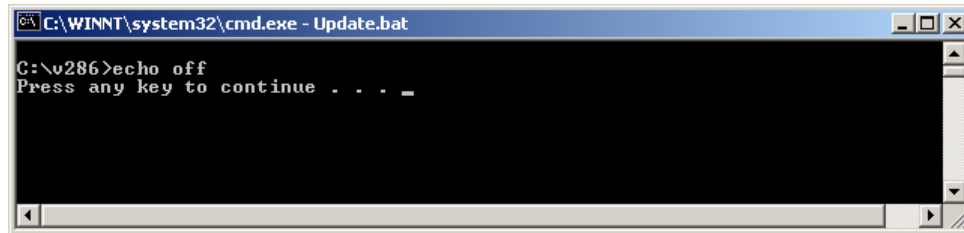
If the printer replies, the connection is OK and you can proceed with the following step.

Enter: Update.bat <Enter>



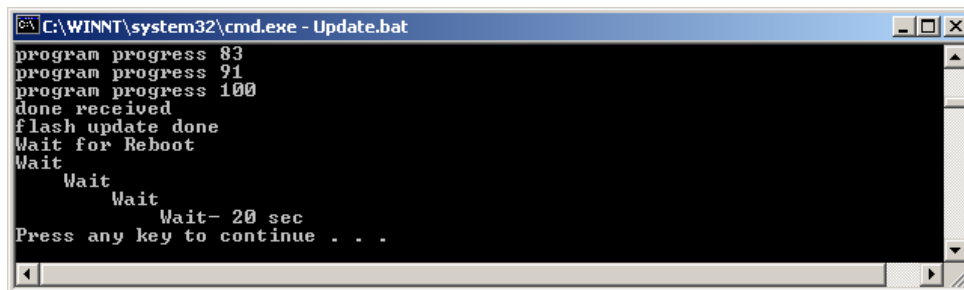
KONICA MINOLTA

Konica Minolta Printing Solutions Europe B.V.  
Support Department  
Website: [www.konicaminolta.net/printer/](http://www.konicaminolta.net/printer/)



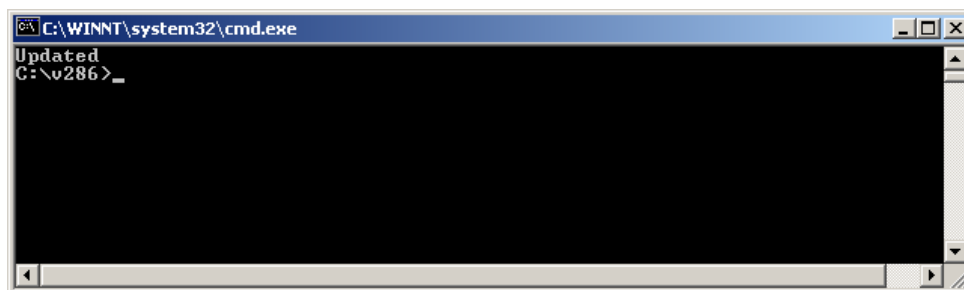
```
C:\WINNT\system32\cmd.exe - Update.bat
C:\v286>echo off
Press any key to continue . . . _
```

Press any key to continue, the printer firmware will be upgraded. After the upgrade, wait until the printer has rebooted and press any key to continue:



```
C:\WINNT\system32\cmd.exe - Update.bat
program progress 83
program progress 91
program progress 100
done received
flash update done
Wait for Reboot
Wait
Wait
Wait- 20 sec
Press any key to continue . . . _
```

Now, the printer's internal menu- and demopages will be updated.  
After the update has completed, the following screen will be displayed:



```
C:\WINNT\system32\cmd.exe
Updated
C:\v286>_
```

You can close the DOS window now, the update has completed.

Print a printer configuration now to verify the new firmware version, this should be version 2.86 now.